



INSTALLATION

L.E.D. HALO 7" HEADLIGHT TRIM RING 7785

PARTS INCLUDED

- 1 7" Headlight Trim Ring
- 1 L.E.D. Light Ring
- 1 Hardware kit including:
 - 1 M4 x .07 Custom Nut
 - 1 M4 x .07 x 35mm Pan Head Screw
 - 3 4" Black Cable Ties
 - 1 Dielectric Grease Packet
- 1 Installation Instructions

Please read and understand entire instructions before starting installation.

THANK YOU FOR CHOOSING KÜRYAKYN!

IN ORDER TO PROTECT YOU AND OTHERS FROM POSSIBLE INJURY AND/OR PROPERTY DAMAGE OR LOSS, PLEASE PAY CLOSE ATTENTION TO ALL INSTRUCTIONS, WARNINGS, CAUTIONS AND NOTICES REGARDING THE USE AND CARE OF THIS PRODUCT.

WARNING

THIS INDICATION ALERTS YOU TO THE FACT THAT IGNORING THE CONTENTS DESCRIBED HEREIN CAN RESULT IN POTENTIAL DEATH OR SERIOUS INJURY.

NOTICE

This indication alerts you to the fact that ignoring the contents described herein may negatively affect product performance and functionality.

NOTICE

IF INSTALLING THIS PRODUCT FOR ANOTHER PARTY, PLEASE MAKE SURE THEY RECEIVE THIS COPY OF THE INSTALLATION INSTRUCTIONS SO THEY ARE AWARE OF THE IMPORTANT INFORMATION CONTAINED IN THEM.

TOOLS SUGGESTED

Set of Torx Wrenches, Phillips Screwdriver

STRICTLY OBSERVE THE FOLLOWING GUIDELINES IN ORDER TO USE THE PRODUCT PROPERLY AND AVOID POTENTIALLY DANGEROUS ACCIDENTS.

STEP 1

Read and understand all steps in the instructions before starting the installation. Park the motorcycle on a hard, level surface and turn off the ignition.

NOTICE

A factory service manual may be helpful in performing this installation. Do not attempt to perform this installation if you are not confident in your ability to complete all of the steps in the procedure; consult a trained technician.

NOTICE

Avoid damage to the motorcycle. Protect painted surfaces with a soft cloth or blanket.

CUSTOMER SERVICE

877.370.3604 (toll free)

INSTALLATION QUESTIONS

techsupport@kuryakyn.com
or call 715.247.2983

LIMITED WARRANTY

Kuryakyn warrants that any Kuryakyn products sold hereunder, shall be free of defects in materials and workmanship for a period of one (1) year from the date of purchase by the consumer excepting the following provisions:

- Kuryakyn shall have no obligation in the event the customer is unable to provide a receipt showing the date the customer purchased the product(s).
 - The product must be properly installed, maintained and operated under normal conditions.
 - Kuryakyn makes no warranty, expressed or implied, with respect to any gold plated products.
 - Kuryakyn shall not be liable for any consequential and incidental damages, including labor and paint, resulting from failure of a Kuryakyn product, failure to deliver, delay in delivery, delivery in nonconforming condition, or for any breach of contract or duty between Kuryakyn and a customer.
- Kuryakyn products are often intended for use in specific applications. Kuryakyn makes no warranty if a Kuryakyn product is used in applications other than intended.
- Kuryakyn electrical products are warranted for one (1) year from the date of purchase by the consumer. L.E.D.'S contained in components of Kuryakyn products will be warranted for defects in materials and workmanship for 3 years from the date of purchase where as all other components shall be warranted for one(1) year. This includes, but is not limited to; control modules, wiring, chrome & other components.
- Kuryakyn makes no warranty of any kind in regard to other manufacturer's products distributed by Kuryakyn. Kuryakyn will pass on all warranties made by the manufacturer and where possible, will expedite the claim on behalf of the customer, but ultimately, responsibility for disposition of the warranty claim lies with the manufacturer.

ABOUT OUR CATALOG

For purchasing Kuryakyn® products, you can receive a complete catalog free of charge. Send the Proof-of-Purchase below with your address to: Kuryakyn, P.O. Box 339, Somerset, WI 54025. Please indicate either Accessories Catalog for Harley-Davidson® or GL & Metric Cruisers.

Be sure to ask your local dealer about other Kuryakyn® products, the motorcycle parts and accessories designed for riders by riders.

©2005 Kuryakyn USA® All Rights reserved.

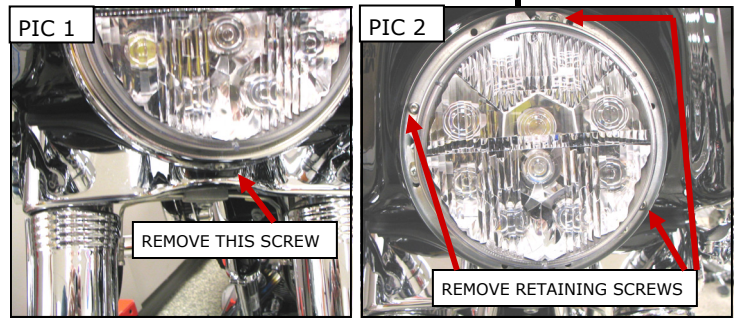


kuryakyn.com

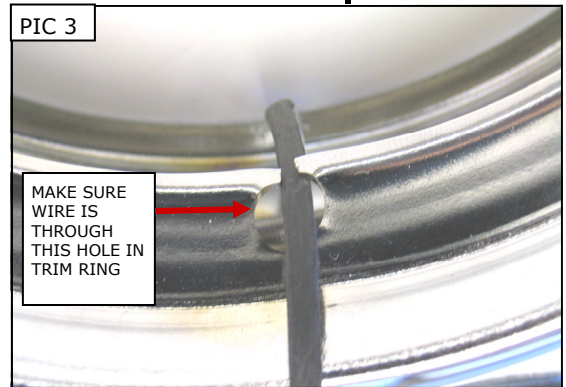
-cont.-

7785-23HD-0712

STEP 2 Remove the stock headlight trim ring and headlight assembly. The assembly will have hardware that is located around the perimeter of the light basket. Disconnect the light and set all pieces and hardware aside, they will be reused. PIC 1 and PIC 2

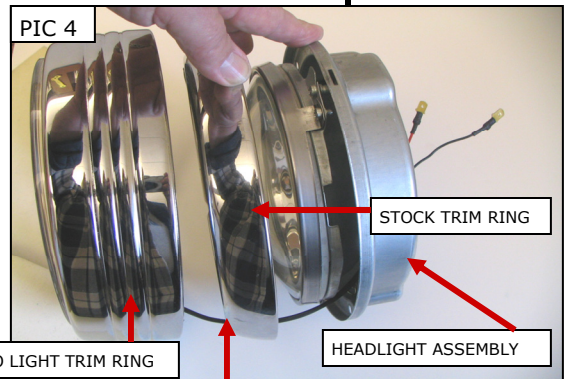


STEP 3 On a bench, take the Halo Light and Trim Ring and route the power wire from the Halo Light through the hole in the Halo Trim Ring. PIC 3 Route the wire through the headlight adjustment slot at the three o'clock position (looking at the bike) in the stock chrome trim ring. PIC 4 Make sure to route the wire between the rubber gasket (if equipped) and the outer chrome part of the stock trim ring. PIC 5 Route the wire behind the headlight so it exits out the backside of the headlight basket. PIC 6



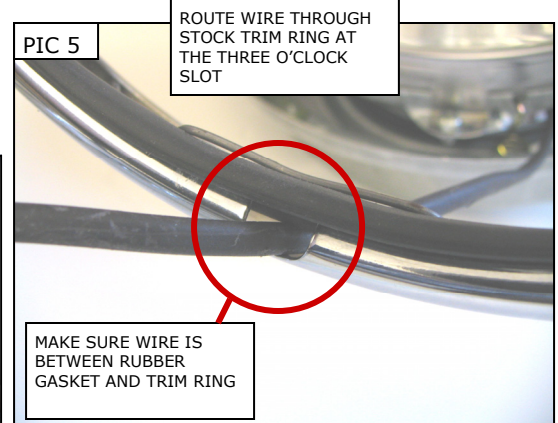
STEP 4 Locate the black ground wire and the orange or orange with a white stripe, power wire that run along side the stock headlight wiring plug. PIC 7

STEP 5 With the help of an assistant to hold the Halo Light and Trim Ring, the stock chrome trim ring, and the headlight basket, hook up the wires from the Halo Light to the bike. The red wire from the Halo Light goes to the orange or orange with white stripe power wire and the black from the light goes to the black ground wire. PIC 8 After plugging these wires together, wrap each connection with black electrical tape to ensure there is no metal showing that may cause a short circuit. PIC 8



STEP 6 With the help of an assistant to hold the head light assembly, stock chrome trim ring and the Halo Light and Trim Ring, plug the headlight back in and reinstall the headlight housing assembly to the bike with the hardware removed in Step 2.

STEP 7 Install the stock chrome trim ring with the hardware removed in Step 2. **Make sure the wire for the Halo Light is through the adjuster hole at the three o'clock position (PIC 4) and between the rubber gasket (if equipped) and the chrome trim ring. PIC 5**



STEP 8 Install the new Halo Light Trim ring by hooking the inner lip of the Halo Trim Ring in the gap behind the stock chrome trim ring. PIC 9 Install the included pan head bolt through the holes in the bottom of the retaining ring. Install the custom nut on the pan head bolt and tighten securely. PIC 10 **Make sure the wires for the Halo light are run through the hole in the trim ring and are not pinched between the stock trim ring and the headlight.** PIC 3 on Page 2

NOTICE Secure all wiring away from any moving parts, pinch points or extreme heat. Küryakyn WILL NOT issue a warranty on any electrical component that fails due to pinched, crimped, broken, abraded, melted or frayed wires.

STEP 9 Thoroughly clean the installed Halo Chrome Trim Ring with an ammonia based cleaner such as window cleaner to remove any finger prints or debris in the area the Halo Light will attach. PIC 11

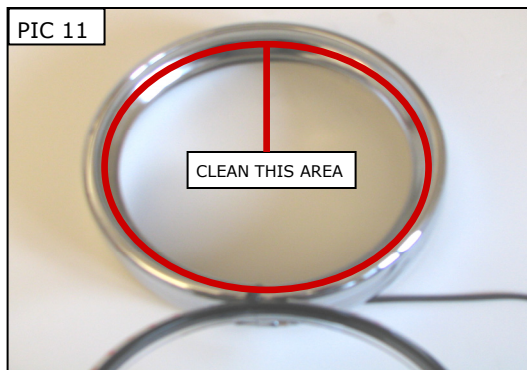
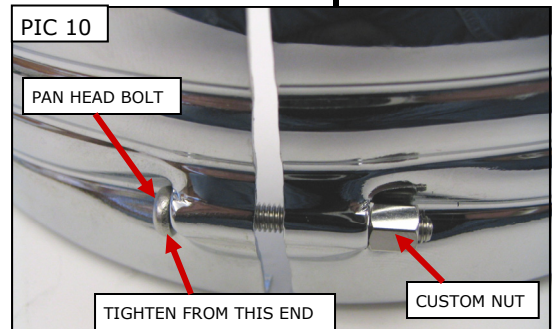
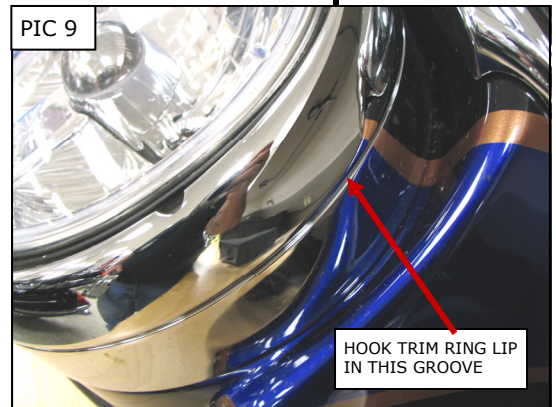
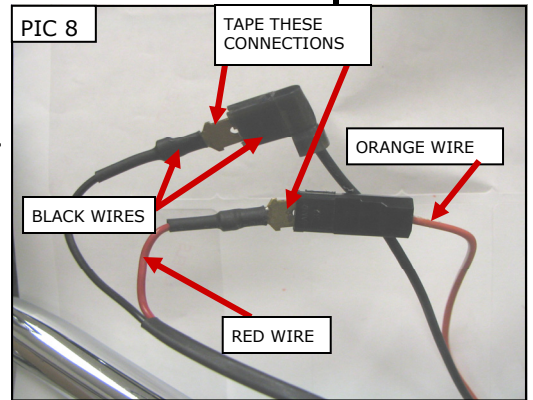
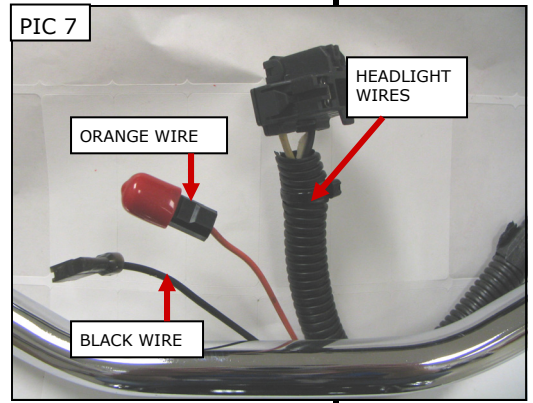
NOTICE Ensure the area of installation is free of grease, oil, dirt or other debris to ensure proper adhesion. Küryakyn WILL NOT issue a warranty on any parts lost due to improper installation.

NOTICE The adhesive will not bond correctly if applied at temperatures less than 50°F. Do not attempt this installation in temperatures less than 50°F.

STEP 10 Take the new Halo light ring and using the back of your fingernail, rub the adhesive tape backing to activate the adhesive. Remove the backing and install the Halo Light ring to the Chrome Halo Trim Ring. Press and hold the light in place for one full minute. Full bonding will occur in 24 hours.

STEP 11 Turn on the bike and check that all lights are working correctly.

WARNING ENSURE PROPER LIGHT OPERATION BEFORE RIDING THE MOTORCYCLE. VISIBILITY IS A MAJOR CONCERN FOR MOTORCYCLISTS. A LIGHT MALFUNCTION COULD RESULT IN DEATH OR SERIOUS INJURY.



Ride On!