

INSTALLATION INSTRUCTIONS

REFLEX DRINK HOLDER WITH RIGHT SIDE H-D PASSENGER MOUNT

6486 CHROME OR 6487 GLOSS BLACK

THANK YOU FOR CHOOSING KURYAKYN!

Protect yourself and others from possible injury and property damage or loss. Pay close attention to all instructions, warnings, cautions, and notices regarding the installation, use, and care of this product.

⚠ WARNING THIS INDICATION ALERTS YOU TO THE FACT THAT IGNORING THE CONTENTS DESCRIBED HEREIN CAN RESULT IN POTENTIAL DEATH OR SERIOUS INJURY.

⚠ CAUTION THIS INDICATION ALERTS YOU TO THE FACT THAT IGNORING THE CONTENTS DESCRIBED HEREIN CAN RESULT IN MINOR OR MODERATE POTENTIAL INJURY.

NOTICE THIS INDICATION ALERTS YOU TO THE FACT THAT IGNORING THE CONTENTS DESCRIBED HEREIN MAY NEGATIVELY AFFECT PRODUCT PERFORMANCE AND FUNCTIONALITY OR DAMAGE THE PRODUCT ITSELF OR THE PRODUCT TO WHICH IT IS BEING ATTACHED.

ENSURE THAT THE FOLLOWING PARTS HAVE BEEN INCLUDED IN THE KIT:

1	Drink Holder	1	Paint Protection Film
1	Drink Holder Mount	1	Alcohol Pad
1	Drink Holder Nut		

YOU WILL ALSO NEED:

Combination wrench set, torx drivers set, socket set, in-lbs torque wrench, warm soapy water and a clean rag, masking tape, blue Loctite

NOTICE THESE INSTALLATION INSTRUCTIONS CONTAIN IMPORTANT INFORMATION. ENSURE THE END USER RECEIVES THIS COPY AND IS AWARE OF ITS IMPORTANCE FOR FUTURE USE.

STEP 1 Read and understand all steps in the instructions before starting the installation. Park the motorcycle on a hard, level surface and turn off the ignition. Let motorcycle cool.

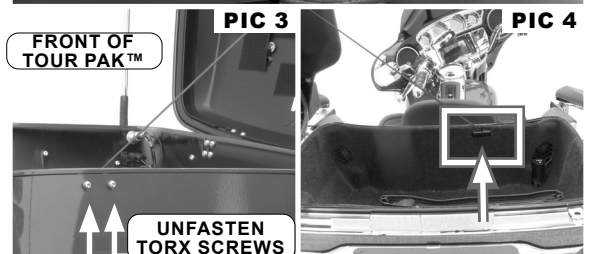
STEP 2 Refer to PIC 2. Use masking tape to mark the rearward edge of the right side speaker pod.

STEP 3 Open the Tour Pak™ lid.

NOTICE TO REMOVE THE TOUR PAK™ LINER, THE TETHER ANCHOR WILL NEED TO BE DISCONNECTED. THE TETHER ANCHOR CAN RETRACT RAPIDLY CAUSING DAMAGE TO THE MOTORCYCLE. SECURE THE TETHER WHILE THE SCREWS ARE BEING REMOVED.

NOTE: GET SOMEONE TO HELP SECURE THE TOUR PAK™ LID UNTIL THE TETHER ANCHOR IS REATTACHED TO PREVENT THE LID FROM OPENING TOO FAR.

STEP 4 Refer to PIC 3 and 4. On the front of the Tour Pak™, locate and remove the two Torx screws. Removing the screws will release the tether anchor.



KURYAKYN.COM

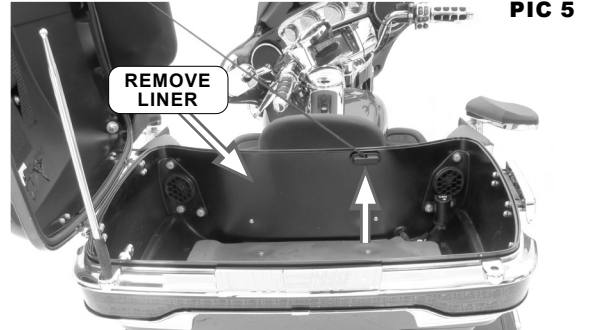
INSTALLATION INSTRUCTIONS

REFLEX DRINK HOLDER WITH RIGHT SIDE H-D PASSENGER MOUNT

-CONTINUED-

STEP 5 Refer to PIC 5. Remove the Tour Pak™ liner; pull upward on the rear of the liner to remove it.

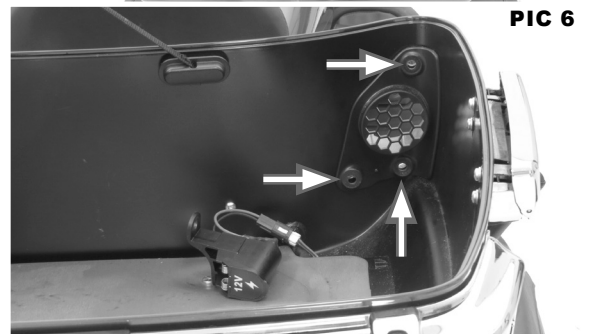
STEP 6 Refer to PIC 5. With the lid open, reattach the tether anchor. Do not over tighten the screws.



NOTICE

AVOID DAMAGE TO THE MOTORCYCLE. PROTECT PAINTED SURFACES WITH A SOFT CLOTH OR SERVICE COVER.

STEP 7 Refer to PIC 6 and 7. Cover the right-side saddlebag lid with a soft cloth or service cover. From the inside of the Tour Pak™ on the right (brake side), remove the three (3) hex head screws and washers that secure the speaker pod to the pak. Apply a small amount of blue Loctite to the threads of the screws. Set hardware aside, they will be reused. Set the speaker pod on the soft cloth or service cover. Ensure the bass port and gasket remain in place.



NOTICE

ENSURE PROPER ADHESION OF THIS PRODUCT. REMOVE ALL GREASE, OIL, BUGS, DIRT, AND OTHER DEBRIS (INCLUDING WAX AND POLISH) FROM THE INSTALLATION AREA. KURYAKYN WILL NOT PROVIDE WARRANTY COVERAGE ON PRODUCTS OR COMPONENTS LOST OR DAMAGED DUE TO IMPROPER INSTALLATION.

DO NOT ATTEMPT THIS INSTALLATION IN TEMPERATURES BELOW 50°F (10°C). PROPER ADHESIVE BONDING ONLY OCCURS ABOVE 50°F (10°C).

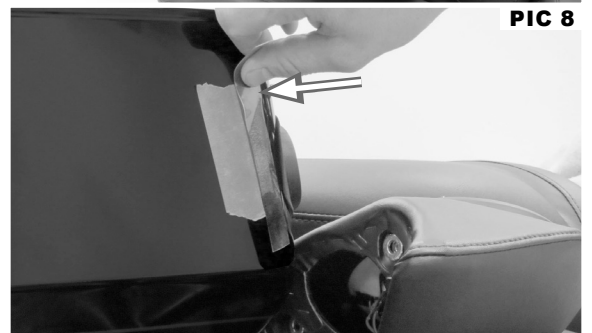
STEP 8 Refer to PIC 7. Using warm soapy water and a clean rag, remove all dirt and debris from the installation area; allow the area to dry completely.

Wipe the installation area with the included alcohol pad to remove any wax or polish; allow the area to dry completely.



STEP 9 Remove and discard the backing from the Protective Tape.

STEP 10 Refer to PIC 8. Using the masking tape mark as a guide, apply the Protective Tape to the Tour Pak™ just forward of the masking tape; smooth out any air bubbles with your finger. Remove and discard the masking tape.



INSTALLATION INSTRUCTIONS

REFLEX DRINK HOLDER WITH RIGHT SIDE H-D PASSENGER MOUNT

-CONTINUED-

- STEP 11** Refer to PIC 9. Locate provided Drink Holder Mount and Drink Holder Nut. Place the nut onto the ball mount of the drink holder mount, the fastening side facing out towards the ball mount.

Note: Drink Holder Nut might be located on the drink holder's mounting base, or individually within the packaging it came in.

- STEP 12** Refer to PIC 9 and 10. Locate provided Drink Holder. Align and press the base of the Drink Holder over the ball mount of the installed mount. Use the Drink Holder Nut, located on the installed mount, to secure the assembly in place.

- STEP 13** Refer to PIC 11. Locate mounting hardware that was removed in Step 7. Ensure the bass port flange is fully seated in the hole. On the inside of the Tour Pak™ align the power outlet with the mounting holes. On the outside of the Tour Pak™ align the assembled drink holder mount with the mounting holes. From the inside, insert a screw and washer assembly through the top aligned mounting holes.

- STEP 14** Align the speaker pod with the bass port flange and fasten it to the top screw. Leave the screw finger tight for now.

- STEP 15** Refer to PIC 12. Inside the Tour Pak™, insert the remaining OEM screw and washer assemblies, from Step 7, into the aligned lowering mounting holes. Fully tighten all hardware.

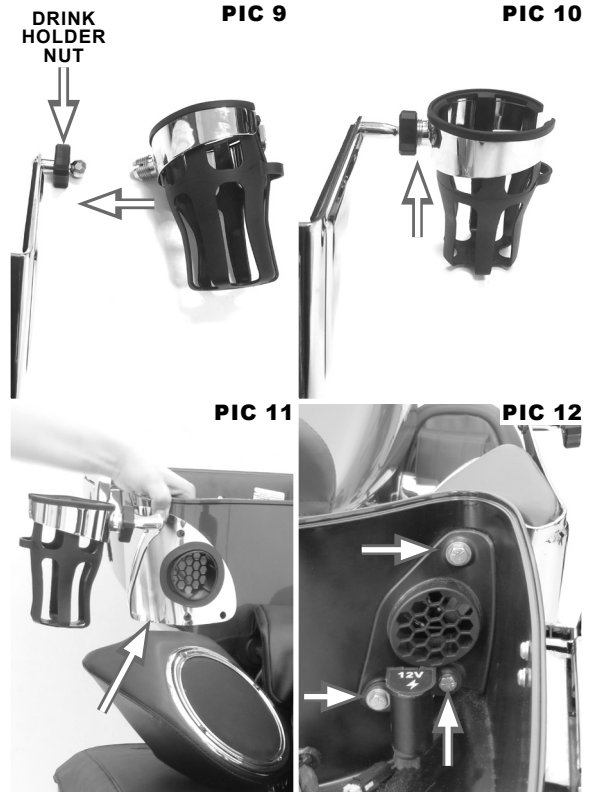
TORQUE VALUE OF HEX HEAD SCREWS:
20-25 in-lbs (2.3-2.8 Nm)

- STEP 16** Get someone to help secure the lid; remove the tether anchor, reinstall the liner, apply a small amount of blue Loctite to the threads of the torx screws, then reinstall the tether anchor. Fully tighten all hardware. Close the lid.

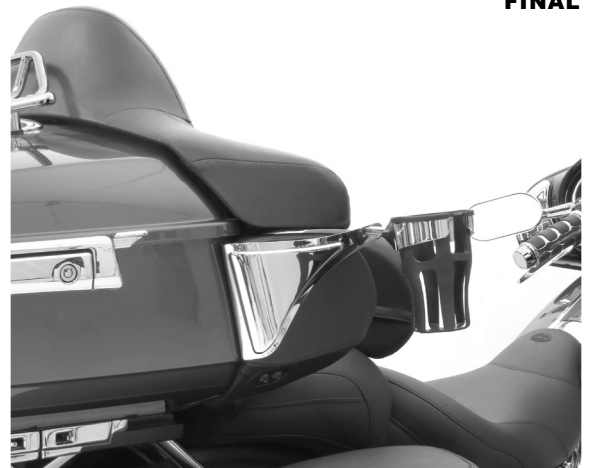
TORQUE VALUE OF TORX SCREWS:
25-35 in-lbs (2.8-3.9 Nm)

CAUTION

THIS PRODUCT WAS DESIGNED FOR USE AS A DRINK HOLDER ONLY. DO NOT USE THE DRINK HOLDER TO MOUNT OR DISMOUNT THE MOTORCYCLE. DO NOT APPLY YOUR BODY WEIGHT TO THE DRINK HOLDER TO ADJUST YOUR SEATING POSITION. DAMAGE AND INJURY MAY RESULT FROM IMPROPER USE.



FINAL



INSTALLATION INSTRUCTIONS

REFLEX DRINK HOLDER WITH RIGHT SIDE H-D PASSENGER MOUNT

-CONTINUED-

NOTICE

IT IS THE INSTALLER'S RESPONSIBILITY TO ENSURE THAT ALL OF THE FASTENERS (INCLUDING PRE-ASSEMBLED) ARE TIGHTENED BEFORE OPERATION OF THE MOTORCYCLE. KURYAKYN WILL NOT PROVIDE WARRANTY COVERAGE ON PRODUCTS OR COMPONENTS LOST DUE TO IMPROPER INSTALLATION OR LACK OF MAINTENANCE. PERIODIC INSPECTION AND MAINTENANCE ARE REQUIRED ON ALL FASTENERS.

LIMITED WARRANTY

Kuryakyn warrants that any Kuryakyn products sold hereunder, shall be free of defects in materials & workmanship for a period of one (1) year from the date of purchase by the consumer excepting the following provisions:

1. Kuryakyn shall have no obligation in the event the customer is unable to provide a receipt showing the date the customer purchased the product(s).
2. The product must be properly installed, maintained & operated under normal conditions.
3. Kuryakyn shall not be liable for any consequential & incidental damages, including labor & paint, resulting from failure of a Kuryakyn product, failure to deliver, delay in delivery, delivery in nonconforming condition, or for any breach of contract or duty between Kuryakyn & a customer.
4. Kuryakyn products are often intended for use in specific applications. Kuryakyn makes no warranty if a Kuryakyn product is used in applications other than intended.
5. Kuryakyn electrical products are warranted for one (1) year from the date of purchase by the consumer. L.E.D.'s contained in components of Kuryakyn products will be warranted for defects in materials & workmanship for 3 years from the date of purchase whereas all other components shall be warranted for one (1) year.
6. All warranty claims must be directed to the place of purchase. Merchandise sold through internet auction sites or any other unauthorized reseller shall not carry a Kuryakyn warranty. If unsure, please contact the place of purchase to verify they are an authorized Kuryakyn reseller.

RETURN POLICY

Merchandise determined to be defective may be returned up to one year from the date of purchase. Returns must be processed through original seller. Returned merchandise for any other reason other than warranty claims must be in like new condition & subject to a 20% restocking fee. All returns are subject to inspection for determination of full or partial credit. Any returned part that shows evidence of being used or installed contrary to manufacturer's instructions, &/or subjected to improper handling, packaging or return shipping by the customer, will not be eligible for exchange, refund or warranty consideration. All returned electrical items will be inspected & tested. If electrical item is deemed functional, no credit will be issued & item will be returned. All sales are final on discontinued or closeout merchandise.

©2015 KURYAKYN HOLDINGS, LLC ALL RIGHTS RESERVED

KURYAKYN, KURYAKYN K logo and the marks appearing on this instruction sheet are registered and common law trademarks of Kuryakyn Holdings except noted third-party trademarks. A full listing of trademarks and trademark registrations owned by Kuryakyn Holdings can be found at www.kuryakyn.com/legal-notice.

Emissions Notice: The California Air Resources Board (CARB) does not permit the use of aftermarket emission-related parts(s) that alter the performance of OEM emission-related devices unless CARB has issued an Executive Order, other than on racing vehicles on closed courses. Check your local laws and manufacturer's information.

Listed Manufacturers and product model names are for reference only. All product and company names are trademarks or registered trademarks of their respective holders. Use of them does not imply any affiliation with or endorsement by them. All specifications are subject to change without notice.

For additional information on third-party product and company names, please consult our Web page at www.kuryakyn.com/legal-notice