

INSTALLATION INSTRUCTIONS

TRACER REAR FENDER TIP LIGHT FOR LIMITED AND ULTRAS

2966 CHROME WITH RED LENS OR 2967 GLOSS BLACK WITH SMOKE LENS

THANK YOU FOR CHOOSING KURYAKYN!

Protect yourself and others from possible injury and property damage or loss. Pay close attention to all instructions, warnings, cautions, and notices regarding the installation, use, and care of this product.

⚠ WARNING THIS INDICATION ALERTS YOU TO THE FACT THAT IGNORING THE CONTENTS DESCRIBED HEREIN CAN RESULT IN POTENTIAL DEATH OR SERIOUS INJURY.

⚠ CAUTION THIS INDICATION ALERTS YOU TO THE FACT THAT IGNORING THE CONTENTS DESCRIBED HEREIN CAN RESULT IN MINOR OR MODERATE POTENTIAL INJURY.

NOTICE THIS INDICATION ALERTS YOU TO THE FACT THAT IGNORING THE CONTENTS DESCRIBED HEREIN MAY NEGATIVELY AFFECT PRODUCT PERFORMANCE AND FUNCTIONALITY OR DAMAGE THE PRODUCT ITSELF OR THE PRODUCT TO WHICH IT IS BEING ATTACHED.

ENSURE THAT THE FOLLOWING PARTS HAVE BEEN INCLUDED IN THE KIT:

- | | | | |
|----|--|---|--------------|
| 1 | Tracer Rear Fender Tip Light | 6 | Cord Keepers |
| 2 | M4 x 0.7mm x 10mm Phillips Head Screws | 2 | Alcohol Pads |
| 12 | 6" Cable Ties | 2 | Foam Pads |
| 8 | Cable Tie Mounts | | |

YOU WILL ALSO NEED:

Socket and socket bit set, torx set, ratchet, stubby Philips screwdriver

NOTICE THESE INSTALLATION INSTRUCTIONS CONTAIN IMPORTANT INFORMATION. ENSURE THE END USER RECEIVES THIS COPY AND IS AWARE OF ITS IMPORTANCE FOR FUTURE USE.

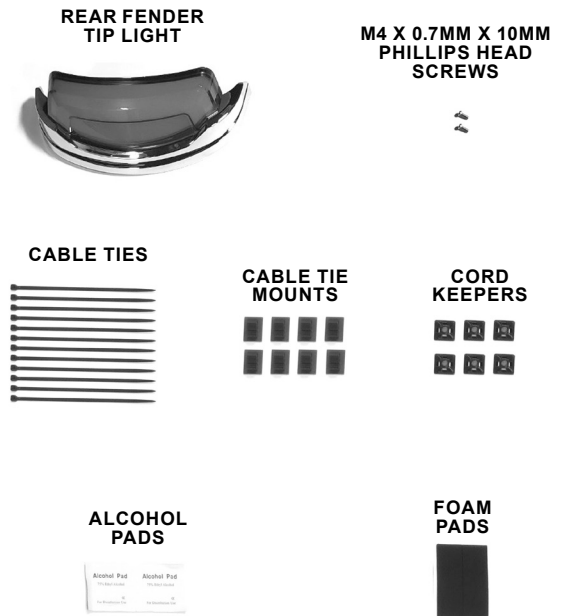
NOTICE A FACTORY SERVICE MANUAL MAY BE HELPFUL IN PERFORMING THIS INSTALLATION. DO NOT ATTEMPT TO PERFORM THIS INSTALLATION AND CONSULT A TRAINED TECHNICIAN IF YOU ARE NOT CONFIDENT IN YOUR ABILITY TO COMPLETE ALL OF THE STEPS IN THESE INSTRUCTIONS.

⚠ WARNING THE END USER'S SAFETY DEPENDS UPON PROPER INSTALLATION OF THIS PRODUCT. IF A STEP IN THESE INSTRUCTIONS IS NOT WITHIN YOUR CAPABILITIES OR YOU DO NOT HAVE THE CORRECT TOOLS, HAVE YOUR DEALER PERFORM THE PROCEDURE. IMPROPER INSTALLATION OF THIS PRODUCT COULD RESULT IN DEATH OR SERIOUS INJURY.

⚠ WARNING ACCIDENTAL VEHICLE START-UP COULD CAUSE DEATH OR SERIOUS INJURY, REMOVE THE MAIN FUSE BEFORE PROCEEDING.

NOTICE CLEARANCE BETWEEN THE REAR TIRE AND REAR FENDER WILL BE NEEDED FOR INSTALLATION OF THE PRODUCT (ROUTING AND SECURING WIRE ALONG THE INSIDE OF THE REAR FENDER TO THE TAILLIGHT AREA, AND REMOVAL OF FENDER SUPPORT BRACKET). A JACK TO LIFT THE REAR, OR THE REMOVAL OF THE REAR TIRE, MAY BE NEEDED TO ALLOW YOU THE SPACE YOU NEED. IF A STEP IN THESE INSTRUCTIONS IS NOT WITHIN YOUR CAPABILITIES OR YOU DO NOT HAVE THE CORRECT TOOLS, HAVE YOUR DEALER PERFORM THE PROCEDURE

PIC 1



INSTALLATION INSTRUCTIONS

TRACER REAR FENDER TIP LIGHT FOR LIMITED AND ULTRAS

-CONTINUED-

STEP 1 Read and understand all steps in the instructions before starting the installation. Park the motorcycle on a hard, level surface and turn off the ignition. Let motorcycle cool.

STEP 2 Remove main fuse.

STEP 3 Refer to PIC 2. From the rear of the motorcycle, locate the fender support bracket. On both left (clutch) and right (brake) side, unfasten and remove the bolts closest to the rear fender. Set them aside, they will be reused.

STEP 4 Refer to PIC 3 and 4. From the inside of the rear fender, unfasten and remove the lock nut and flat washer securing the rear fender support bracket to the rear fender. Set hardware and bracket aside, they will be reused.

STEP 5 Refer to PIC 5. From the inside of the rear fender, unfasten and remove the bolts securing the OEM rear fender trim or light. Set hardware and rear fender trim or light aside, they will not be reused.

Note: If removing OEM rear fender light, refer to your user manual for additional assistance.

STEP 6 Clean the lower outside area of the rear fender where the new light will be installed.

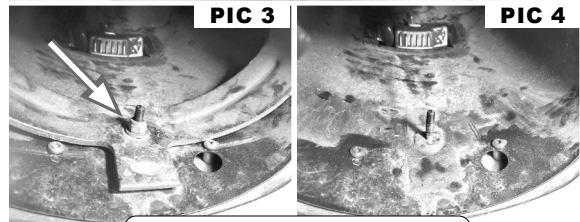
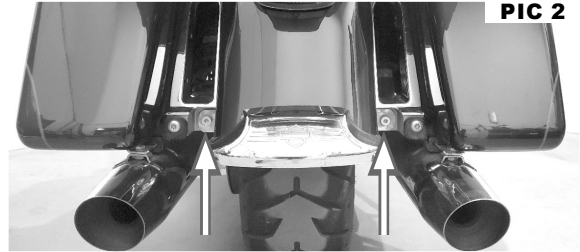
STEP 7 Refer to PIC 6. Locate rear taillight. Unfasten the two screws securing the rear taillight to the rear fender. Disconnect the taillight and remove the light. Set hardware and light aside, they will be reused.

STEP 8 Refer to PIC 7. Locate provided Rear Fender Tip Light. Connect Rear Fender Tip Light to the upper left corner of the rear taillight's circuit board.

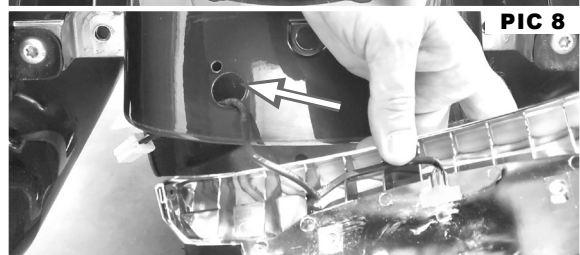
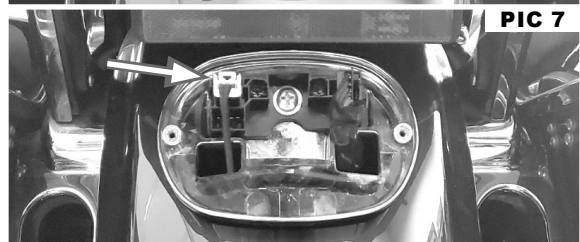
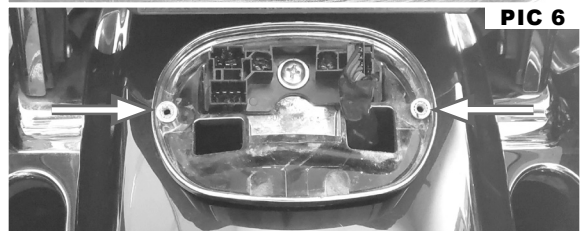
STEP 9 Reconnect rear taillight.

STEP 10 Reinstall main fuse and test Rear Fender Tip Light and taillight for proper run/break operations. Disconnect lights after operational testing. Set them aside for the time being. Remove main fuse.

STEP 11 Refer to PIC 8. Insert the wire of the Rear Fender Tip Light through the large hole on the left (clutch) side of the rear fender. Route the wire up through the inside of the rear fender. Do not secure wires anywhere yet.



INSIDE VIEW OF REAR FENDER



INSTALLATION INSTRUCTIONS

TRACER REAR FENDER TIP LIGHT FOR LIMITED AND ULTRAS

-CONTINUED-

- STEP 12** Refer to PIC 9. Insert the connector end of the Rear Fender Tip Light through the opening in the OEM rear taillight. Connect the plug of the light to the upper left corner of the rear taillight's circuit board.

Note: If Kuryakyn Tracer Taillight is installed, the backer plate of the taillight, that is still installed on the rear fender, will need to be temporarily removed. Once the backer plate is removed, feed the wire through the gasket, and then through the backer plate. Reinstall the backer plate onto the rear fender. Connect the plug to the taillight's circuit board as noted above.

- STEP 13** Refer to PIC 10. Locate provided two (2) M4 X 0.7 X 10mm Phillips Head Screws. On the outside of the rear fender, align and place the Tracer Rear Fender Tip along the bottom edge of the rear fender. From the inside of the rear fender, align the mounting holes of the light and the rear fender. Secure the light in place using the two (2) provided screws. Fully tighten all hardware.

- STEP 14** Locate OEM fender support bracket and mounting hardware that was removed in Step 3 and 4. Reinstall the bracket using the OEM hardware, starting on the inside of the rear fender, followed by the two (2) outside mounts.

TORQUE VALUE FOR FENDER SUPPORT BRACKET SCREWS:
45-85 in-lbs (5.1-9.6 Nm)

- STEP 15** Reconnect and reinstall the taillight to the taillight backer plate that is installed on the rear fender, using the OEM hardware that was removed in Step 7.

- STEP 16** Secure all wires in a safe place. Be sure to secure the wires where they won't pinch, pull, or be damaged. Refer to your user manual for additional assistance for reinstalling it. Use provided cable ties, cable keepers and/or cable mounts.

NOTICE

SECURE ALL WIRING AWAY FROM ANY MOVING PARTS, PINCH POINTS OR EXTREME HEAT. KURYAKYN WILL NOT ISSUE A WARRANTY ON ANY ELECTRICAL COMPONENT THAT FAILS DUE TO PINCHED, CRIMPED, BROKEN, ABRADED, MELTED OR FRAYED WIRES.

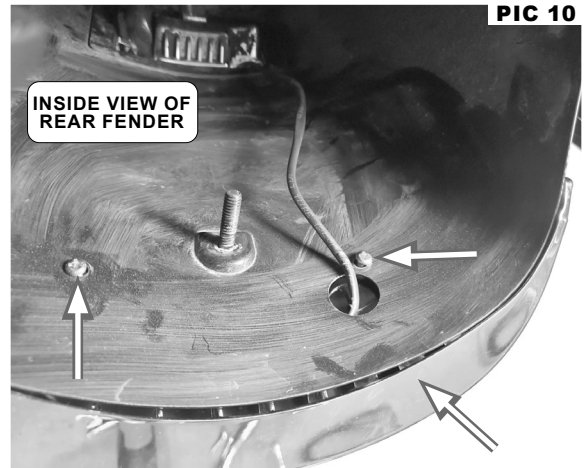
- STEP 17** Reinstall main fuse and test light for proper run/brake operations.

WARNING

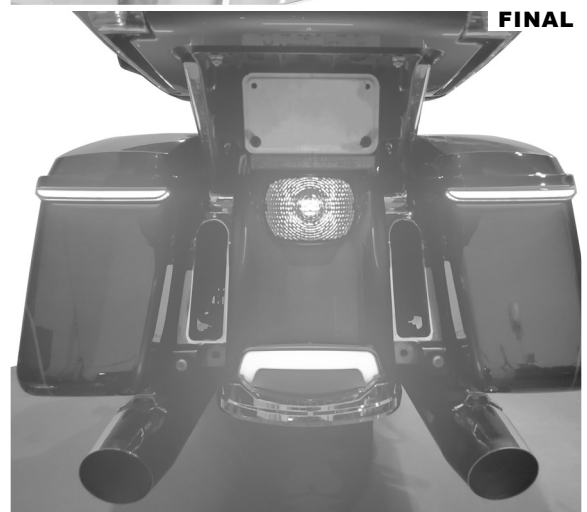
ENSURE PROPER LIGHT OPERATION BEFORE RIDING THE MOTORCYCLE. VISIBILITY IS A MAJOR CONCERN FOR MOTORCYCLISTS. A LIGHT MALFUNCTION COULD RESULT IN DEATH OR SERIOUS INJURY.



PIC 9



PIC 10



FINAL

INSTALLATION INSTRUCTIONS

TRACER REAR FENDER TIP LIGHT FOR LIMITED AND ULTRAS

-CONTINUED-

NOTICE

IT IS THE INSTALLER'S RESPONSIBILITY TO ENSURE THAT ALL OF THE FASTENERS (INCLUDING PRE-ASSEMBLED) ARE TIGHTENED BEFORE OPERATION OF THE MOTORCYCLE. KURYAKYN WILL NOT PROVIDE WARRANTY COVERAGE ON PRODUCTS OR COMPONENTS LOST DUE TO IMPROPER INSTALLATION OR LACK OF MAINTENANCE. PERIODIC INSPECTION AND MAINTENANCE ARE REQUIRED ON ALL FASTENERS.

LIMITED WARRANTY

Kuryakyn warrants that any Kuryakyn products sold hereunder, shall be free of defects in materials & workmanship for a period of one (1) year from the date of purchase by the consumer excepting the following provisions:

1. Kuryakyn shall have no obligation in the event the customer is unable to provide a receipt showing the date the customer purchased the product(s).
2. The product must be properly installed, maintained & operated under normal conditions.
3. Kuryakyn shall not be liable for any consequential & incidental damages, including labor & paint, resulting from failure of a Kuryakyn product, failure to deliver, delay in delivery, delivery in nonconforming condition, or for any breach of contract or duty between Kuryakyn & a customer.
4. Kuryakyn products are often intended for use in specific applications. Kuryakyn makes no warranty if a Kuryakyn product is used in applications other than intended.
5. Kuryakyn electrical products are warranted for one (1) year from the date of purchase by the consumer. L.E.D.'s contained in components of Kuryakyn products will be warranted for defects in materials & workmanship for 3 years from the date of purchase whereas all other components shall be warranted for one (1) year.
6. All warranty claims must be directed to the place of purchase. Merchandise sold through internet auction sites or any other unauthorized reseller shall not carry a Kuryakyn warranty. If unsure, please contact the place of purchase to verify they are an authorized Kuryakyn reseller.

RETURN POLICY

Merchandise determined to be defective may be returned up to one year from the date of purchase. Returns must be processed through original seller. Returned merchandise for any other reason other than warranty claims must be in like new condition & subject to a 20% restocking fee. All returns are subject to inspection for determination of full or partial credit. Any returned part that shows evidence of being used or installed contrary to manufacturer's instructions, &/or subjected to improper handling, packaging or return shipping by the customer, will not be eligible for exchange, refund or warranty consideration. All returned electrical items will be inspected & tested. If electrical item is deemed functional, no credit will be issued & item will be returned. All sales are final on discontinued or closeout merchandise.

©2015 KURYAKYN HOLDINGS, LLC ALL RIGHTS RESERVED

KURYAKYN, KURYAKYN K logo and the marks appearing on this instruction sheet are registered and common law trademarks of Kuryakyn Holdings except noted third-party trademarks. A full listing of trademarks and trademark registrations owned by Kuryakyn Holdings can be found at www.kuryakyn.com/legal-notice.

Emissions Notice: The California Air Resources Board (CARB) does not permit the use of aftermarket emission-related parts(s) that alter the performance of OEM emission-related devices unless CARB has issued an Executive Order, other than on racing vehicles on closed courses. Check your local laws and manufacturer's information.

Listed Manufacturers and product model names are for reference only. All product and company names are trademarks or registered trademarks of their respective holders. Use of them does not imply any affiliation with or endorsement by them. All specifications are subject to change without notice.

For additional information on third-party product and company names, please consult our Web page at www.kuryakyn.com/legal-notice