

INSTALLATION INSTRUCTIONS

TRACER L.E.D. FAIRING LOWER ACCENTS FOR H-D '06-'13

2956 CHROME OR 2957 SATIN BLACK

THANK YOU FOR CHOOSING KURYAKYN!

Protect yourself and others from possible injury and property damage or loss. Pay close attention to all instructions, warnings, cautions, and notices regarding the installation, use, and care of this product.

⚠ WARNING THIS INDICATION ALERTS YOU TO THE FACT THAT IGNORING THE CONTENTS DESCRIBED HEREIN CAN RESULT IN POTENTIAL DEATH OR SERIOUS INJURY.

⚠ CAUTION THIS INDICATION ALERTS YOU TO THE FACT THAT IGNORING THE CONTENTS DESCRIBED HEREIN CAN RESULT IN MINOR OR MODERATE POTENTIAL INJURY.

NOTICE THIS INDICATION ALERTS YOU TO THE FACT THAT IGNORING THE CONTENTS DESCRIBED HEREIN MAY NEGATIVELY AFFECT PRODUCT PERFORMANCE AND FUNCTIONALITY OR DAMAGE THE PRODUCT ITSELF OR THE PRODUCT TO WHICH IT IS BEING ATTACHED.

ENSURE THAT THE FOLLOWING PARTS HAVE BEEN INCLUDED IN THE KIT:

1	Left L.E.D. Accent	12	6" Cable Ties	6	Cable Tie Mounts
1	Right L.E.D. Accent	6	Cord Keepers	2	Alcohol Pads
2	Run Turn Wire Adapters				

YOU WILL ALSO NEED:

Torx bit set, standard socket set, ratchet, in-lbs (Nm) torque wrench, Blue loctite, clean rag and warm soapy water

NOTICE THESE INSTALLATION INSTRUCTIONS CONTAIN IMPORTANT INFORMATION. ENSURE THE END USER RECEIVES THIS COPY AND IS AWARE OF ITS IMPORTANCE FOR FUTURE USE.

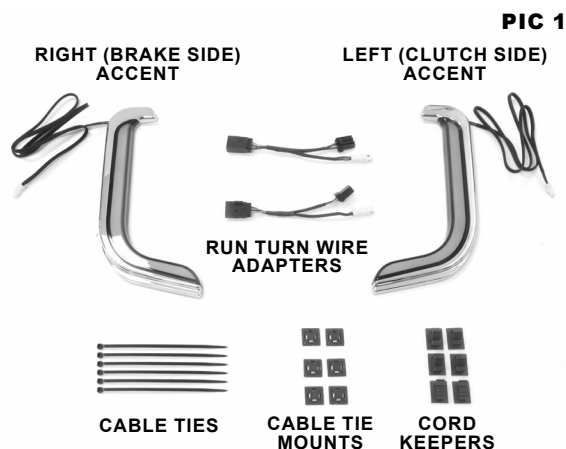
IF STOCK INCANDESCENT TURN SIGNALS ARE BEING REPLACED BY L.E.D.S AT THE SAME TIME THESE AUXILIARY LIGHTS ARE BEING ADDED, SEPARATE PURCHASE OF TURN SIGNAL REGULATOR (P/N 2996) MAY BE NEEDED TO AVOID FAST OR ERRATIC TURN SIGNAL FLASH RATES.

NOTICE A FACTORY SERVICE MANUAL MAY BE HELPFUL IN PERFORMING THIS INSTALLATION. DO NOT ATTEMPT TO PERFORM THIS INSTALLATION AND CONSULT A TRAINED TECHNICIAN IF YOU ARE NOT CONFIDENT IN YOUR ABILITY TO COMPLETE ALL OF THE STEPS IN THESE INSTRUCTIONS.

⚠ WARNING THE END USER'S SAFETY DEPENDS UPON PROPER INSTALLATION OF THIS PRODUCT. IF A STEP IN THESE INSTRUCTIONS IS NOT WITHIN YOUR CAPABILITIES OR YOU DO NOT HAVE THE CORRECT TOOLS, HAVE YOUR DEALER PERFORM THE PROCEDURE. IMPROPER INSTALLATION OF THIS PRODUCT COULD RESULT IN DEATH OR SERIOUS INJURY. ACCIDENTAL VEHICLE START-UP COULD CAUSE DEATH OR SERIOUS INJURY, REMOVE THE MAIN FUSE BEFORE PROCEEDING.

NOTICE FOR EASE OF INSTALLATION, HAVE A SECOND PERSON HELP WITH THE REMOVAL AND INSTALLMENT OF THE OUTER FAIRING AND/OR AUXILIARY/FOG LIGHTS.

NOTICE AVOID DAMAGE TO THE MOTORCYCLE. PROTECT PAINTED SURFACES WITH A SOFT CLOTH OR BLANKET. PLACE SOFT CLOTH OR BLANKET ON FRONT FENDER.



KURYAKYN.COM

INSTALLATION INSTRUCTIONS

TRACER L.E.D. FAIRING LOWER ACCENTS FOR H-D '06-'13

-CONTINUED-

- STEP 1** Read and understand all steps in the instructions before starting the installation. Park the motorcycle on a hard, level surface and turn off the ignition. Let motorcycle cool.
- STEP 2** Remove main fuse.
- STEP 3** Unfasten the three (3) screws securing the windshield, and remove the windshield. Set the windshield and mounting hardware aside, it will be reused.
- STEP 4** Refer to PIC 2. Remove the two (2) inner fairing outer screws located just below the speakers. Lock out the front wheel (fully turn it left and right) to gain access to and remove the two (2) inner fairing lower screws.

Note: Refer to motorcycle's service manual for additional assistance.

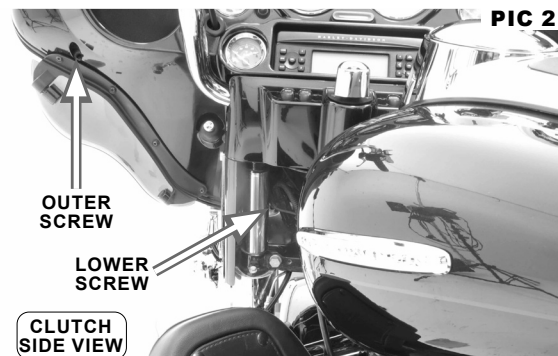
Note: For models without auxiliary/fog lights, be sure to hold the outer fairing in place while removing the last screws to prevent it from falling out of place.

Note: For ease of removal of the outer fairing, have a second person help by holding the outer fairing in place while the mounting hardware is being removed.

- STEP 5** **FOR MODELS WITH AUXILIARY/FOG LIGHTS:**
Refer to PIC 3. Remove the bottom screws securing the lights to the fork frame. Loosen the top screws, but do not remove them. Lower the lights from it's mounted position and gently set onto soft cover on the rear fender. Disconnect the headlight and remove the outer fairing from the motorcycle. Gently place it on a soft clean surface away from the bike. Once outer fairing is removed realign light assembly with mounting holes and loosely secure it in place by reinstalling the lower screws.

FOR MODELS WITHOUT AUXILIARY/FOG LIGHTS:
Disconnect the headlight and remove the outer fairing from the motorcycle. Gently place it on a soft clean surface away from the bike.

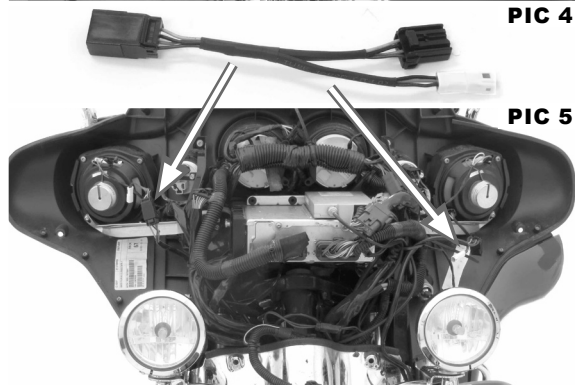
- STEP 6** Locate and disconnect both the left and the right turn signal harnesses.
- STEP 7** Refer to PIC 4 and 5. Locate provided Run Turn Wire Adapters. Connect an adapter to each turn signal wire harness on the motorcycle.
- STEP 8** Refer to PIC 6. Locate provided left (clutch side) and right (brake side) L.E.D. Accents. Connect the left light to a left wiring adapter and the right light to a right wiring adapter.



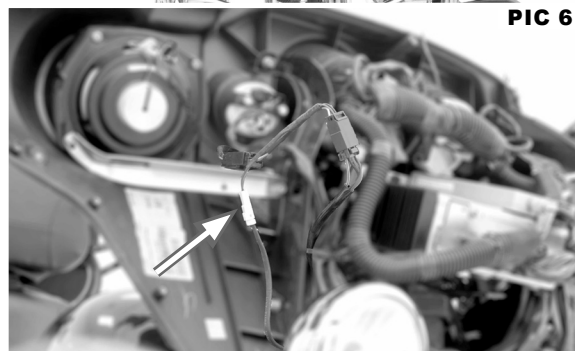
PIC 2



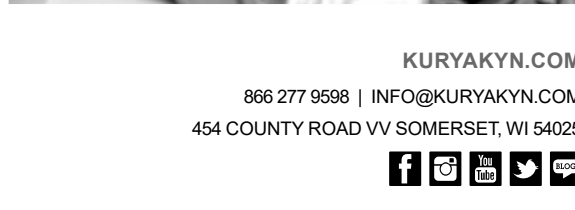
PIC 3



PIC 4



PIC 5



PIC 6

KURYAKYN.COM

INSTALLATION INSTRUCTIONS

TRACER L.E.D. FAIRING LOWER ACCENTS FOR H-D '06-'13

-CONTINUED-

- STEP 9** Reinstall main fuse and test lights for proper run/turn operations. Disconnect lights after operational testing. Set them aside for the time being. Remove main fuse.

NOTICE

ENSURE PROPER ADHESION OF THIS PRODUCT. REMOVE ALL GREASE, OIL, BUGS, DIRT, AND OTHER DEBRIS (INCLUDING WAX AND POLISH) FROM THE INSTALLATION AREA. KURYAKYN WILL NOT PROVIDE WARRANTY COVERAGE ON PRODUCTS OR COMPONENTS LOST OR DAMAGED DUE TO IMPROPER INSTALLATION. DO NOT ATTEMPT THIS INSTALLATION IN TEMPERATURES BELOW 50°F (10°C). PROPER ADHESIVE BONDING ONLY OCCURS ABOVE 50°F (10°C).

- STEP 10** Using warm soapy water and a clean rag, remove all dirt and debris from the installation area; allow the area to dry completely.

Wipe the installation area with provided alcohol pads to remove any wax or polish; allow the area to dry completely.

- STEP 11** Refer to PIC 7. Test fit the accents on the lower fairing area. Use masking tape to make alignment marks; remove the accents.

- STEP 12** Refer to PIC 8. Unfasten the door flap from the glove box door on the lower fairing.

- STEP 13** Refer to PIC 8 and 9. Unfasten the two flange nuts located on the inside of the glove box department. Remove the fairing cap from the lower fairing.

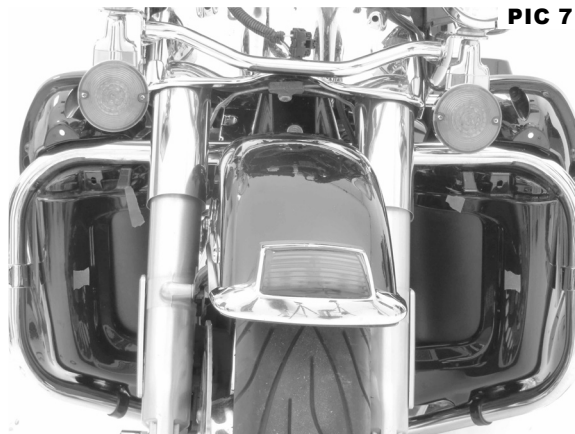
- STEP 14** Refer to PIC 10. Align the left (clutch side) accent with the left lower fairing; press into place for one minute; full bonding will occur after 24 hours. Repeat process on the right side with the right (brake side) accent. Remove alignment masking tape.

Note: If the bike is going to be operated before full bonding occurs, secure the lid light to the bike with a good quality masking or painter's tape.

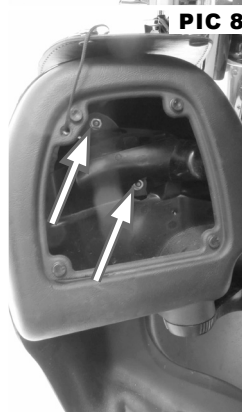
- STEP 15** Route the L.E.D. accent wires up to the inner fairing area and connect them to the installed adapter. Connect the accents to their corresponding wire adapter. Reinstall main fuse and test lights for proper run/turn operations.

- STEP 16** Locate lower fairing caps and mounting hardware that was removed in Step 13. Apply a small amount of blue loctite to the threads of the clips studs located on the fairing caps. Align and reinstall lower fairing caps with lower fairings.

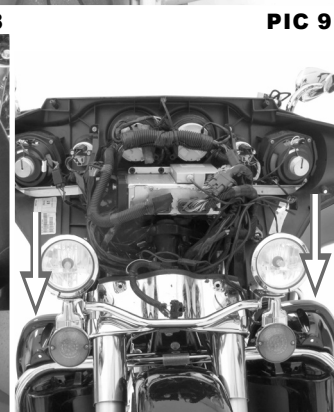
Note: Be sure clip studs on lower fairing caps are properly in place before align with lower fairing, otherwise the studs will not align with the mounting holes correctly.



PIC 7



PIC 8



PIC 9



PIC 10

INSTALLATION INSTRUCTIONS

TRACER L.E.D. FAIRING LOWER ACCENTS FOR H-D '06-'13

-CONTINUED-

NOTICE

SECURE ALL WIRING AWAY FROM ANY MOVING PARTS, PINCH POINTS OR EXTREME HEAT. KURYAKYN WILL NOT ISSUE A WARRANTY ON ANY ELECTRICAL COMPONENT THAT FAILS DUE TO PINCHED, CRIMPED, BROKEN, ABRADED, MELTED OR FRAYED WIRES.

- STEP 17** Use provided Cable Ties, Cord Keepers, and Cable Tie Mounts to fasten the accent wires around lower fairings, forks, and inner fairing area. Be sure to fasten the wires where they won't pinch, pull, or be damaged.

Note: Before securing the wires to anything, be sure wherever the wires will be fastened, the front wheel has full range (able to turn left and right) without the wires being pinched, pulled, or damaged.

- STEP 18** Refer to PIC 11. Locate OEM outer fairing mounting hardware that was removed in Step 4, and the outer fairing that was removed in Step 5. Apply a small amount of blue loctite to the threads of the mounting hardware. In reverse order, remove auxiliary/fog lights from forks, if applicable. Reconnect the headlight. Realign and reinstall the outer fairing using the hardware that was removed in Step 4. Reinstall auxiliary/fog lights if applicable. Do not fully tighten hardware yet.

- STEP 19** Refer to PIC 11. Locate windshield and mounting hardware that as removed in Step 3. Apply a small amount of blue loctite to the threads of the mounting hardware. Align and reinstall windshield.

- STEP 20** Fully tighten all hardware.

TORQUE VALUE FOR OUTER FAIRING SCREWS:
20-30 in-lbs (2.3-3.4 Nm)

TORQUE VALUE FOR WINDSHIELD SCREWS:
25-30 in-lbs (2.8-3.4 Nm)

TORQUE VALUE FOR FLANGE NUTS SECURING LOWER FAIRING CAPS:
30-35 in-lbs (3.4-4.5 Nm)

TORQUE VALUE FOR FORK MOUNTED TURN SIGNALS WITH AUXILIARY/FOG LAMPS:
96-120 in-lbs (10.9-13.25 Nm)

- STEP 21** Turn motorcycle on and test all lights for proper operations before riding.

PIC 11





INSTALLATION INSTRUCTIONS

TRACER L.E.D. FAIRING LOWER ACCENTS FOR H-D '06-'13

-CONTINUED-

⚠ WARNING

ENSURE PROPER LIGHT OPERATION BEFORE RIDING THE MOTORCYCLE. VISIBILITY IS A MAJOR CONCERN FOR MOTORCYCLISTS. A LIGHT MALFUNCTION COULD RESULT IN DEATH OR SERIOUS INJURY.

NOTICE

IT IS THE INSTALLER'S RESPONSIBILITY TO ENSURE THAT ALL OF THE FASTENERS (INCLUDING PRE-ASSEMBLED) ARE TIGHTENED BEFORE OPERATION OF THE MOTORCYCLE. KURYAKYN WILL NOT PROVIDE WARRANTY COVERAGE ON PRODUCTS OR COMPONENTS LOST DUE TO IMPROPER INSTALLATION OR LACK OF MAINTENANCE. PERIODIC INSPECTION AND MAINTENANCE ARE REQUIRED ON ALL FASTENERS.

LIMITED WARRANTY

Kuryakyn warrants that any Kuryakyn products sold hereunder, shall be free of defects in materials & workmanship for a period of one (1) year from the date of purchase by the consumer excepting the following provisions:

1. Kuryakyn shall have no obligation in the event the customer is unable to provide a receipt showing the date the customer purchased the product(s).
2. The product must be properly installed, maintained & operated under normal conditions.
3. Kuryakyn shall not be liable for any consequential & incidental damages, including labor & paint, resulting from failure of a Kuryakyn product, failure to deliver, delay in delivery, delivery in nonconforming condition, or for any breach of contract or duty between Kuryakyn & a customer.
4. Kuryakyn products are often intended for use in specific applications. Kuryakyn makes no warranty if a Kuryakyn product is used in applications other than intended.
5. Kuryakyn electrical products are warranted for one (1) year from the date of purchase by the consumer. L.E.D.'s contained in components of Kuryakyn products will be warranted for defects in materials & workmanship for 3 years from the date of purchase whereas all other components shall be warranted for one (1) year.
6. All warranty claims must be directed to the place of purchase. Merchandise sold through internet auction sites or any other unauthorized reseller shall not carry a Kuryakyn warranty. If unsure, please contact the place of purchase to verify they are an authorized Kuryakyn reseller.

RETURN POLICY

Merchandise determined to be defective may be returned up to one year from the date of purchase. Returns must be processed through original seller. Returned merchandise for any other reason other than warranty claims must be in like new condition & subject to a 20% restocking fee. All returns are subject to inspection for determination of full or partial credit. Any returned part that shows evidence of being used or installed contrary to manufacturer's instructions, &/or subjected to improper handling, packaging or return shipping by the customer, will not be eligible for exchange, refund or warranty consideration. All returned electrical items will be inspected & tested. If electrical item is deemed functional, no credit will be issued & item will be returned. All sales are final on discontinued or closeout merchandise.

©2015 KURYAKYN HOLDINGS, LLC ALL RIGHTS RESERVED

KURYAKYN, KURYAKYN K logo and the marks appearing on this instruction sheet are registered and common law trademarks of Kuryakyn Holdings except noted third-party trademarks. A full listing of trademarks and trademark registrations owned by Kuryakyn Holdings can be found at www.kuryakyn.com/legal-notice.

Emissions Notice: The California Air Resources Board (CARB) does not permit the use of aftermarket emission-related parts(s) that alter the performance of OEM emission-related devices unless CARB has issued an Executive Order, other than on racing vehicles on closed courses. Check your local laws and manufacturer's information.

Listed Manufacturers and product model names are for reference only. All product and company names are trademarks or registered trademarks of their respective holders. Use of them does not imply any affiliation with or endorsement by them. All specifications are subject to change without notice.

For additional information on third-party product and company names, please consult our Web page at www.kuryakyn.com/legal-notice

KURYAKYN.COM

PAGE 5

302956

DPF-MRK-003 REV A 7/6/21

866 277 9598 | INFO@KURYAKYN.COM

454 COUNTY ROAD VV SOMERSET, WI 54025

